

Name: Key
Date: _____

Mr. Johnson
Math 8

Lesson 6.6 – Creating a Table of Values

Investigate:

Complete the investigate activity on page 351 of your text book. Answer the two questions with arrows beside it and use the table they have started for you. Use the space below to show your work.

Think it out:

What is the definition of mathematics to you?

(Student response)

Mr. Johnson's personal definition of mathematics!

Is the study of patterns / relations.

Definitions:

Relation: a rule that associates two terms

Linear Relation: a relation that has a straight-line graph

Ordered Pair: two numbers in order, first # is x-coordinate
second # is y-coordinate

(6, 3)
(x, y)

Notes:

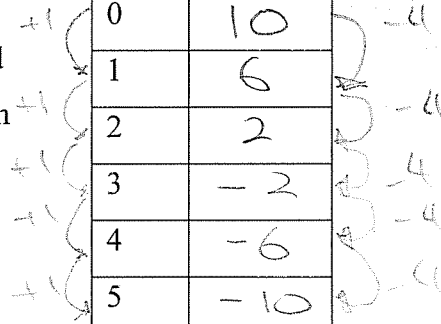
A relation can be represented in many ways. Consider the relation:

x is related to $10 - 4x$

1. We can create a table of values:

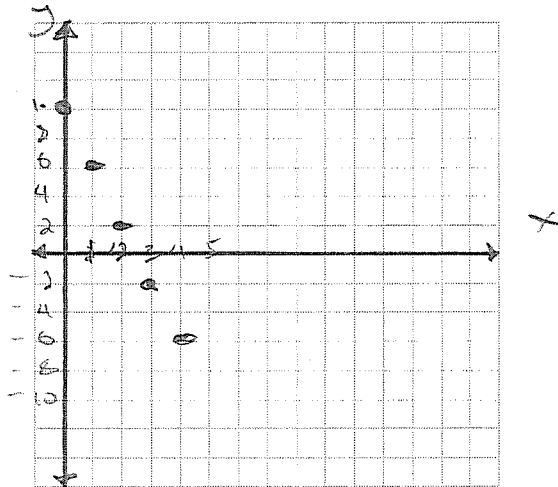
Input	Output
x	$10 - 4x$
0	10
1	6
2	2
3	-2
4	-6
5	-10

(Note that this makes a special relation called a linear relation since the change in the input and the change in the output is constant.



2. We can draw a graph. Use the data from the table above and think of the input as your x coordinate and the output as your y coordinate.

note that there is an infinite amount of points that satisfy this relation



3. We can write an equation for the relation

introduce 2nd variable

$$\therefore y = 10 - 4x$$

x - input
 y - output

We can create ordered pairs also by using our table of values

$$(0, 10), (1, 6), (2, 2), (3, -2), (4, -6), (5, -10)$$

Examples: Complete each table of values.

1. $y = x + 3$

x	y
0	3
1	4
2	5
3	6
4	7
5	8

2. $y = 4x$

x	y
0	0
1	4
2	8
3	12
4	16
5	20

3. $y = -x + 2$

x	y
-2	4
-1	3
0	2
1	1
2	0
3	-1

4. $x + y = -2$

x	y
-3	1
0	-2
3	-5
6	-8
9	-11
12	-14

(Hint: To complete the values you may need to solve the equations using the space below)

Assignment:

Pg. 356-358
#s 2-12, 14-15

1. The first part of the document discusses the importance of maintaining accurate records of all transactions. It emphasizes that this is crucial for ensuring the integrity of the financial statements and for providing a clear audit trail.

2. The second part of the document outlines the various methods used to collect and analyze data. It includes a detailed description of the sampling process and the statistical techniques employed to interpret the results.

3. The third part of the document provides a comprehensive overview of the findings. It highlights the key trends and patterns observed in the data, as well as the implications of these findings for the organization's overall performance.

4. The fourth part of the document discusses the limitations of the study and the potential areas for future research. It acknowledges that while the current study provides valuable insights, there are still several factors that could influence the results and that further investigation is needed to address these issues.

5. The fifth part of the document concludes with a summary of the main points and a final statement on the significance of the research. It reiterates the importance of the findings and the need for continued monitoring and evaluation to ensure the organization's long-term success.

6. The sixth part of the document includes a list of references and a bibliography. It provides a comprehensive list of the sources used in the study, including books, articles, and other relevant documents, to allow readers to further explore the topics discussed in the paper.

Appendix A: Data Collection Methods

This appendix provides a detailed description of the data collection methods used in the study. It includes a list of the variables measured, the instruments used for data collection, and the procedures followed to ensure the accuracy and reliability of the data.

The data collection process involved a series of steps, including the selection of the sample, the design of the data collection instruments, and the implementation of the data collection procedures. Each step was carefully planned and executed to ensure that the data collected was of high quality and accurately reflected the phenomena being studied.

The data collection instruments used in the study were designed to measure the various variables of interest. These instruments included questionnaires, interviews, and observations, each of which was carefully designed to capture the relevant information in a structured and consistent manner.

The data collection procedures were implemented in a systematic and controlled manner. This involved the selection of the sample, the distribution of the data collection instruments, and the collection of the data. Each step was carefully monitored and documented to ensure that the data collection process was carried out in a consistent and reliable manner.

The data collection process was completed over a period of several months. During this time, the data collection instruments were distributed to the sample, and the data was collected and recorded. The data collection process was completed in a timely and efficient manner, and the data was ready for analysis.

The data collection process was a critical component of the study, and it was essential to ensure that the data collected was of high quality and accurately reflected the phenomena being studied. The data collection process was carefully planned and executed to ensure that the data collected was of high quality and accurately reflected the phenomena being studied.

The data collection process was a critical component of the study, and it was essential to ensure that the data collected was of high quality and accurately reflected the phenomena being studied. The data collection process was carefully planned and executed to ensure that the data collected was of high quality and accurately reflected the phenomena being studied.

The data collection process was a critical component of the study, and it was essential to ensure that the data collected was of high quality and accurately reflected the phenomena being studied. The data collection process was carefully planned and executed to ensure that the data collected was of high quality and accurately reflected the phenomena being studied.

The data collection process was a critical component of the study, and it was essential to ensure that the data collected was of high quality and accurately reflected the phenomena being studied. The data collection process was carefully planned and executed to ensure that the data collected was of high quality and accurately reflected the phenomena being studied.

The data collection process was a critical component of the study, and it was essential to ensure that the data collected was of high quality and accurately reflected the phenomena being studied. The data collection process was carefully planned and executed to ensure that the data collected was of high quality and accurately reflected the phenomena being studied.

The data collection process was a critical component of the study, and it was essential to ensure that the data collected was of high quality and accurately reflected the phenomena being studied. The data collection process was carefully planned and executed to ensure that the data collected was of high quality and accurately reflected the phenomena being studied.

The data collection process was a critical component of the study, and it was essential to ensure that the data collected was of high quality and accurately reflected the phenomena being studied. The data collection process was carefully planned and executed to ensure that the data collected was of high quality and accurately reflected the phenomena being studied.

The data collection process was a critical component of the study, and it was essential to ensure that the data collected was of high quality and accurately reflected the phenomena being studied. The data collection process was carefully planned and executed to ensure that the data collected was of high quality and accurately reflected the phenomena being studied.

The data collection process was a critical component of the study, and it was essential to ensure that the data collected was of high quality and accurately reflected the phenomena being studied. The data collection process was carefully planned and executed to ensure that the data collected was of high quality and accurately reflected the phenomena being studied.